

The Kendall SCD™ system

# KENDALL SCD™

## Sequential Compression System

with Vascular Refill Detection



**Cardinal Health**

Essential to care™

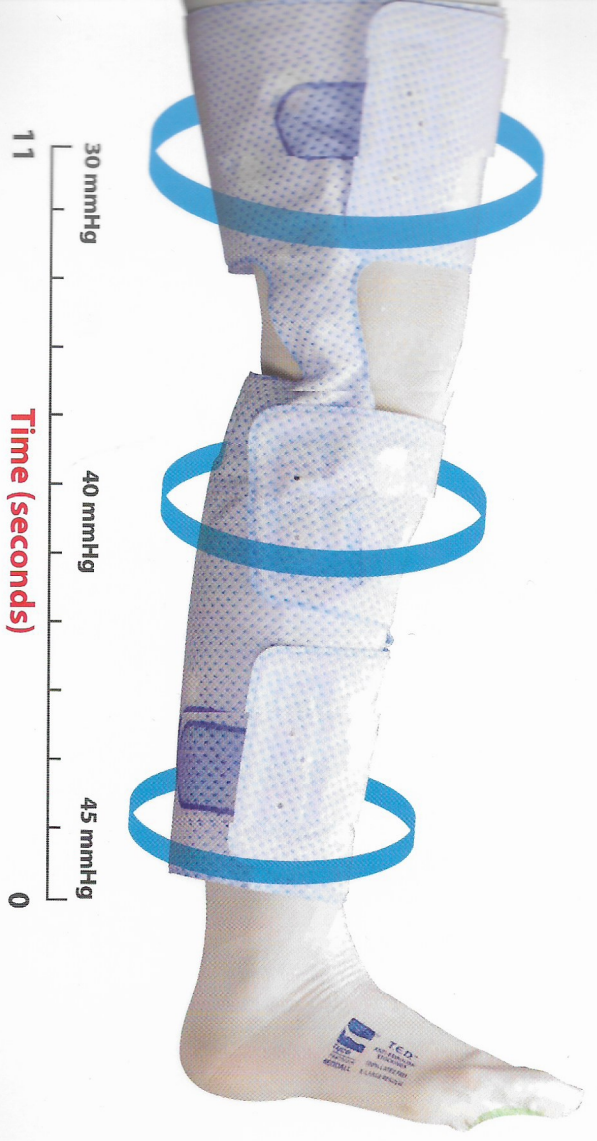
The Kendall SCD™ system is clinically proven to reduce the risk of both Deep Vein Thrombosis<sup>3</sup> (DVT) and Pulmonary Embolism<sup>4</sup> (PE), and to improve survival in stroke patients.<sup>5</sup>

**Circumferential Compression**

- Increases fibrinolytic activity<sup>6</sup>
- Rapidly empties the femoral veins<sup>7</sup>
- Fully collapses valve cusps, where fatal clots can form<sup>8</sup>

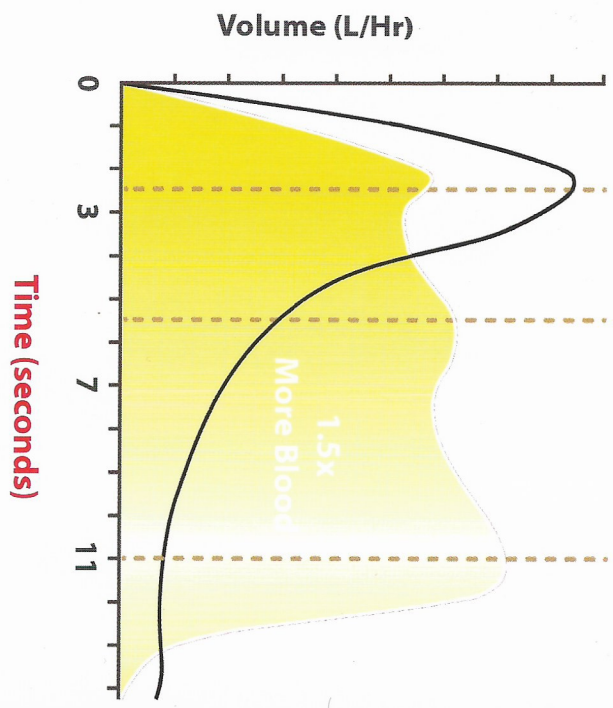
**Sequential & Gradient Compression**

- Maximises femoral blood flow velocity<sup>8</sup>
- Promotes unidirectional blood flow<sup>1</sup>
- Reduces the risk of distal blood trapping<sup>9</sup>



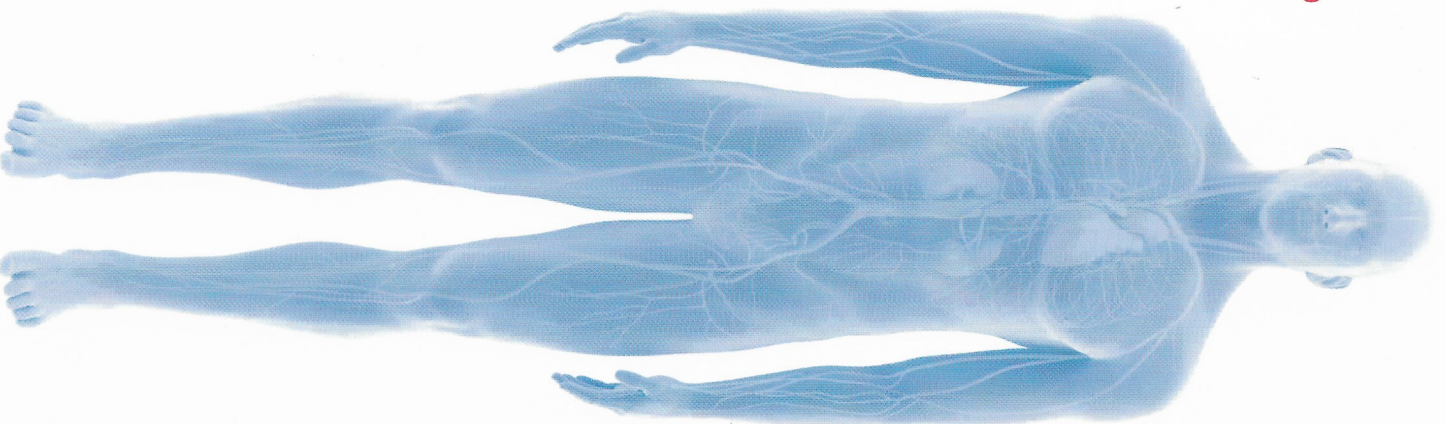
The Kendall SCD™ system provides sustained blood flow velocity, moving more blood over time.<sup>10</sup>

Calf-Only, Uniform Compression System  
 Kendall SCD™, Thigh-Length Compression system



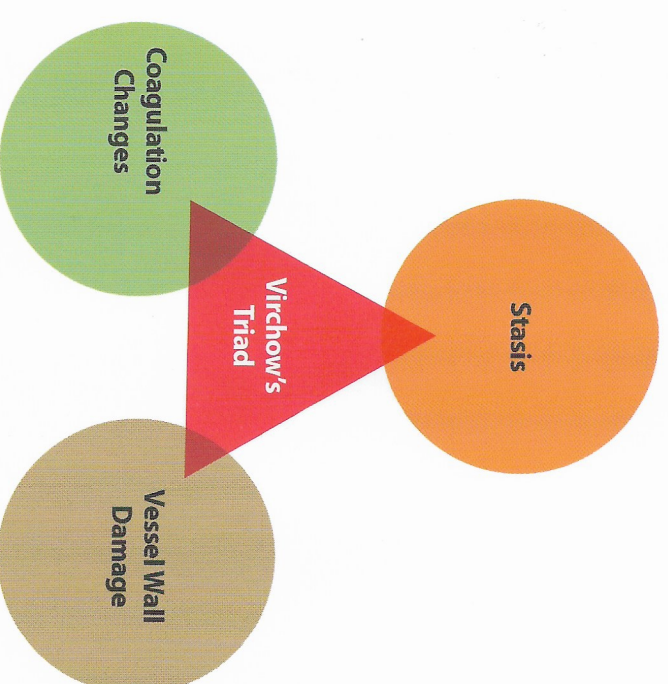
**The efficacy of the Kendall SCD™ system is supported by nearly 100 clinical trials, covering almost all surgical specialties.**

- Stroke
- Neurosurgery
- Trauma
- Cardiac
- Spinal
- Urological
- Abdominal
- Orthopaedics



**The Kendall SCD™ system is effective in reducing the risk of DVT and PE by addressing two of three factors of Virchow's Triad:<sup>5</sup>**

- Stasis by increasing blood flow
- Coagulation changes by stimulating fibrinolytic activity



**Combining Intermittent Pneumatic Compression (IPC) with anticoagulants has been shown to optimise patient outcomes.<sup>11</sup>**

**Anticoagulants alone = 4.21% Overall DVT Rate  
IPC + Anticoagulants = 0.65% Overall DVT Rate**

# Kendall SCD™ 700 Series Controller with Vascular Refill Detection

The Kendall SCD™ 700 Series Controller is a compact, lightweight, easy-to-use, all-in-one controller designed to improve functionality and maximise convenience.



- **Animated error code resolution**
- **Adjustable bed hook**
- **Battery for improved portability**
- **Graphic user interface**
- **Vascular refill detection**
- **IPX3 rating**
- **Therapy meter**
- **Detection mode**

# Vascular refill detection

The Kendall SCD™ system is incorporated with Vascular Refill Detection (VRD), a proprietary technology that customises compression for each patient, moving more blood over time.<sup>1</sup>

## Clinical evidence

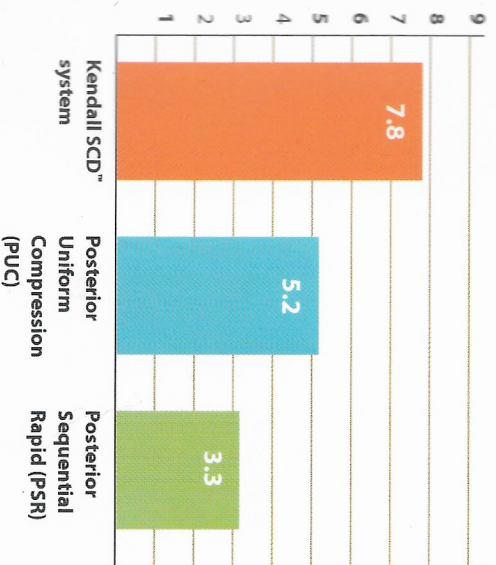
### A 2007 study compared the haemodynamic performances of three different IPC devices:<sup>2</sup>

- Kendall SCD™ system
- Uniform, posterior system with fixed compression cycle (PUC)
- Posterior, sequential, rapid inflation device with fixed compression cycle (PSR)

### The results confirmed that the Kendall SCD™ system:

- Moved more blood per hour;
- Increased the volume of blood per compression cycle;
- Achieved more compression cycles over time.

### Volume of Blood Moved (L/Hr) - Griffin Study<sup>2</sup>



The Kendall SCD™ system measures the time it takes for a patient's veins to refill with blood after being compressed.

The frequency of compression cycles is based on the patient's venous refill time (20 to 60 seconds), which is re-calculated automatically every 30 minutes.