



**WarmTouch™** Convective Warming System.  
Maintaining normothermia has never been so easy.



**COVIDIEN**

*positive results for life™*

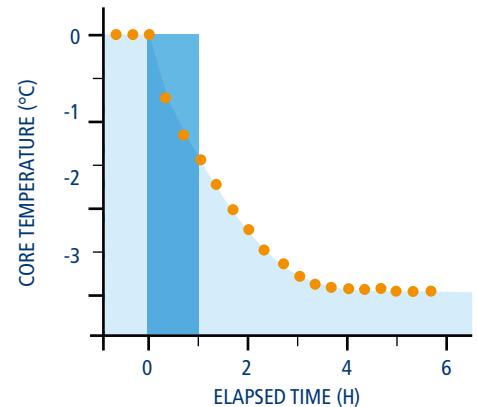


# Unintended intra-operative hypothermia

Hypothermia during surgery is very common. Unwarmed patients can lose up to 1.6°C during the first hour under general anaesthesia, as they are unable to regulate their temperature.<sup>1</sup>

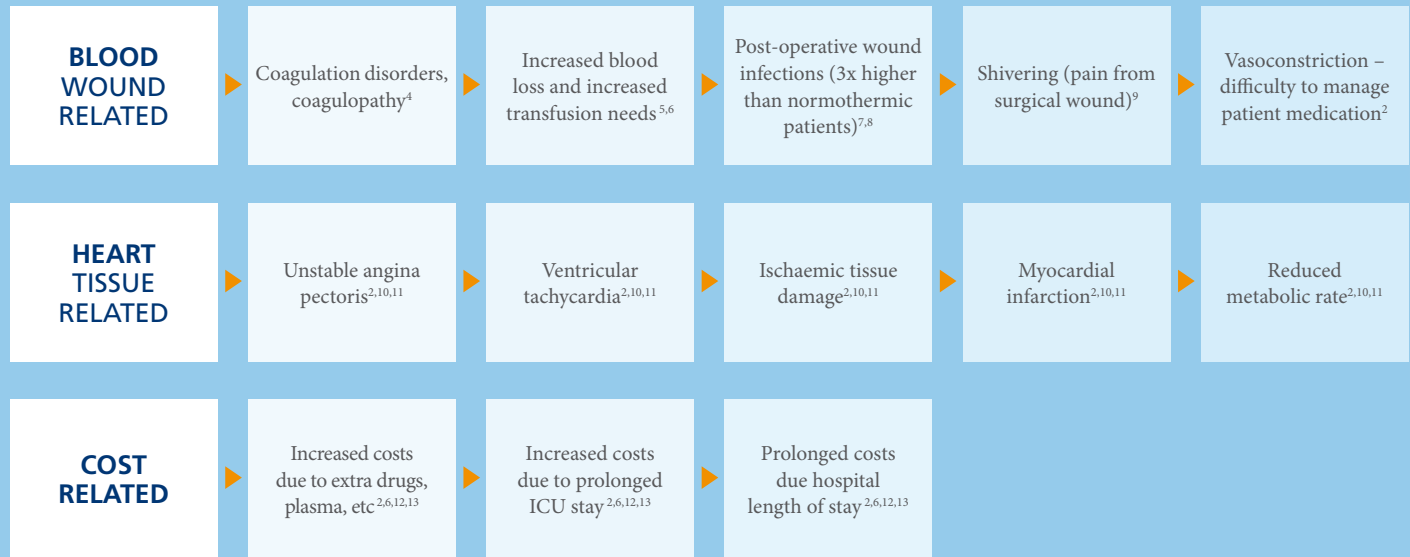
This is followed by a slower, linear decrease in the following hours, caused by heat loss exceeding metabolic heat production.<sup>1</sup>

This unintended hypothermia dangerously increases the risk for post-operative complications delaying recovery and increasing costs.<sup>2</sup>



Adapted from Sessler DI.<sup>3</sup>

# Complications of unintended hypothermia



1 - Takashi Matsukawa, M.D., - Daniell Sessler, M.D., t Andrew M. Sessler, Ph.D.,\* Marc Schroeder, B.A., \$ Makoto Ozaki, M.D.,- Andrea Kurz, M.D.,- Christi Cheng, M.D. Heat Flow and Distribution during Induction of General Anesthesia. *Anesthesiology* :662-673, 1995 | 2 - Mahoney CB, Odom J. Maintaining intraoperative normothermia: A meta-analysis of outcomes and costs. *AANA Journal* April 1999, Volume 67; No. 2 | 3 - Sessler DI. Current Concepts: Mild Perioperative Hypothermia. *N Eng J Med* 1997;336:1730-1737 | 4 - Rohrer M, Natale, A. Effect of hypothermia on the coagulation cascade. *Critical Care Med* 1992; 20: 1402-1405. | 5 - Schmied H, Kurz A, Sessler D, et al. Hypothermia increases blood loss and allogenic transfusion requirements during hip surgery. *Lancet* 1996; 347: 289-292. | 6 - M. Bock, J. Muller, A. Bach, H. Bohrer, E. Martin, J. Motsch. Effects of preinduction and intraoperative warming during major laparotomy. *British Journal of Anaesthesia*, February 1998, Vol 80, No2 , p159-163. | 7 - Sheffield CW, Sessler DI, Hunt TK. Mild hypothermia during anesthesia decreases resistance to *S. aureus* dermal infection. *Anesthesiology* 1992; 77. | 8 - Kurz A, Sessler DI, Lenhardt R. Perioperative normothermia to reduce the incidence of surgical-wound infection and shorten hospitalisation. *N Eng J Med* 1996, 334: 1209-1215. | 9 - Horn, EP. Postoperative shivering: aetiology and treatment. *Current Opinion in Anaesthesiology*. 12(4):449-453, August 1999. | 10 - Steven M. Frank, MD; Lee A. Fleisher, MD; Michael J. Breslow, MD; Michael S. Higgins, MD; Krista F. Olson; Susan Kelly, BSN; Charles Beattie, MD. Perioperative Maintenance of Normothermia Reduces the Incidence of Morbid Cardiac Events. A Randomized Clinical Trial | *JAMA*. 1997;277(14):1127-1134 | 11 - Frank SM, Beattie C, Christopherson R, Norris EJ, Perler Ba, Williams GM, Gottlieb SO. Unintentional hypothermia is associated with postoperative myocardial ischemia. *Anesthesiology* 1993. 78: 468-76. | 12 - Conahan TJ, et al. Heating reduces recovery time (cost) in outpatients. *Anesthesiology* 1982; 67: 128-130. | 13 - Lenhardt R, Marker E, Goll V, Tschernich H, Kurz A, Sessler D, Narz E, Lackner F. Mild intraoperative hypothermia prolongs postanesthetic recovery. *Anesthesiology* 1997; 87: 1318-1323.



COVIDIEN



COVIDIEN WarmFlow



# Covidien offers the **right solution**

The WarmTouch™ convective warming system provides an easy solution in maintaining normothermia. The WarmTouch™ convective warming unit has an intuitive screen showing the temperature and status of each of the 5 temperature settings. The soft but strong WarmTouch™ blanket range is tailored for most surgical procedures, offering tear resistance, even airflow and patient comfort.





# The innovative WarmTouch™ Convective Warming Unit

## **EASY TO USE**

New intuitive LCD screen and menu function provide all information at a glance.

## **EASY TO CONTROL**

5 different settings, including ambient and boost, for more flexibility and precision.

## **EASY TO HANDLE**

The low weight makes it easy to transport and attach to a cart, bedrail or an IV pole.

## **EASY TO SERVICE**

The onscreen filter expiry warning makes it easy to maintain and service.

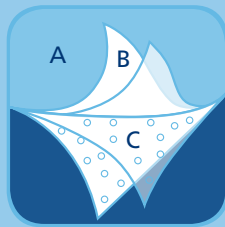


# WarmTouch™ Convective Warming Blankets: A distinctive design to optimize warming efficacy



The soft but strong WarmTouch quilted blankets meet a wide range of needs to offer the optimal solution in easy and effective patient warming.

Made of a strong two-ply material, they resist tears, punctures and fluids, yet are soft and flexible to allow custom draping and comfort for your patients.



- A** The fabric outer layer eliminates hot plastic surfaces which could contact the patient's skin.
- B** Layered construction adds strength, so even minor punctures will not expand and cause the blanket to deflate.
- C** Specially positioned holes direct the airflow evenly onto the patient.

# Warming with precision, handling with flexibility

A full range of blankets to accommodate every type of patient and procedure.



**WARMTOUCH™  
FULL BODY  
BLANKET**

Easy access to chest tubes, arteries and pulse checking. Also available for paediatric.



**WARMTOUCH™  
UPPER BODY  
BLANKET**

Dual inlets for added flexibility.



**WARMTOUCH™  
TORSO  
BLANKET**

Large side flaps to tuck underneath the patient. Dual inlets for added flexibility.



**WARMTOUCH™  
LOWER BODY  
BLANKET**

Precise, localised warming with adjustable tape positioning.



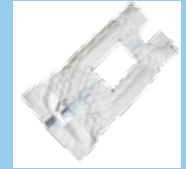
**WARMTOUCH™  
CARDIAC  
BLANKET  
STERILE**

Unique design to minimize air distribution at patient's feet.



**WARMTOUCH™  
PAEDIATRIC  
SURGICAL  
BLANKET**

For over and under body use. Clear plastic head cover to maintain head temperature.



**WARMTOUCH™  
SURGICAL  
ACCESS  
BLANKET  
STERILE**

Sterile access to the surgical site.



# The innovative WarmTouch™ Surgical Access Blanket

With its large surgical access window, the WarmTouch™ surgical access blanket has a unique design to accommodate abdominal and spinal procedures. The WarmTouch surgical access blanket provides all the advantages of full body warming, whilst allowing full access to the surgical site.

## **LARGE SURGICAL ACCESS WINDOW**

Fitted for a majority of procedures and patients

## **UNIQUE 3-INLET DESIGN**

With 2 shoulder and 1 foot inlet to allow for maximum flexibility

**SECURE TAPE POSITIONING** for precise, localised warming

- Prevents warm air entering sterile surgical field
- Prevents warming the surgical staff and operating room

**STERILE PACKAGING** in individual pouches





## Mon-a-Therm™ Temperature Probes and Sensors

Mon-a-Therm temperature probes and sensors monitor patient temperature safely and accurately.

### **UNIVERSAL**

Mon-a-Therm products can be used with the majority of existing monitoring systems. Interface cables for most systems are available. They are also YSI 400 compatible.

**Latex free**

### **SINGLE USE**

Improved hygiene and minimized risk of cross contamination.

# Mon-a-Therm™ Temperature Probes and Sensors

Monitoring of central and body surface temperature at a variety of sites



**GENERAL PURPOSE  
TEMPERATURE PROBE**

For oesophagus, nasopharyngeal or rectal placement. The satin slip surface ensures easy, atraumatic insertion.



**FOLEY CATHETER  
WITH TEMPERATURE  
SENSORS**

Measuring precise core body temperature combined with urinary bladder drainage. Silicone construction ensures durability, reduces irritation and resists encrustation.



**OESOPHAGEAL  
STETHOSCOPE WITH  
TEMPERATURE PROBE**

Soft thin cuff provides outstanding clarity of heart and lung sounds. Depth markings aid proper placement.



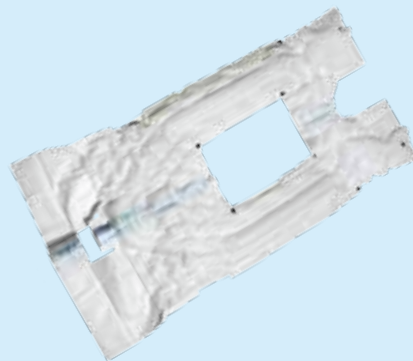
**SKIN TEMPERATURE  
PROBE**

Increased accuracy via the foam pad which reduces environmental temperature influences. Hypoallergenic adhesive for optimal patient comfort.



## WarmTouch™ Convective Warming System.

Maintaining normothermia has never been so easy.



**WarmTouch™**  
Surgical Access Blanket



**WarmTouch™**  
Convective Warming Unit



TO CONTACT US,  
PLEASE VISIT  
[WWW.COVIDIEN.COM](http://WWW.COVIDIEN.COM)  
AND SELECT "CONTACT US"

**IMPORTANT:** Please refer to the package insert for complete instructions, contraindications, warnings and precautions.

This information is intended only for residents of the European Union.

COVIDIEN, COVIDIEN with logo, Covidien logo and "positive results for life" are U.S. and internationally registered trademarks of Covidien AG.™ \* Trademark of its respective owner. Other brands are trademarks of a Covidien company. © 2012 Covidien. - 12 PME 0022 TEMP GB - 08/2012

Use scan app to read